

Why Ultrasound ?

- Safety
 - Anatomic variations visible
 - Collateral "targets" visible
 - Injection visible
 - Lower volumes LA
 - +/- epinephrine

Why Ultrasound ?

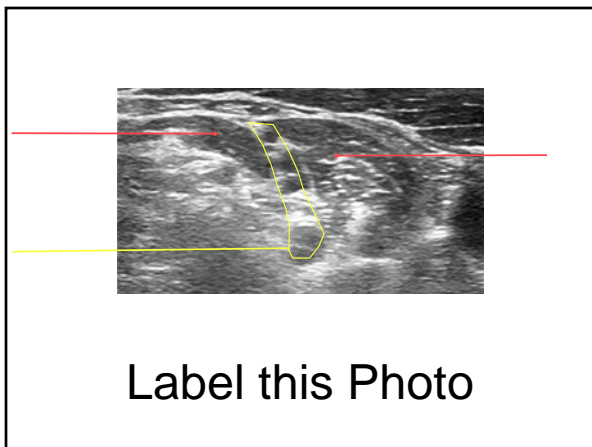
- Efficacy
 - Donut sign
 - Redirect possible for poor LA spread
 - Onset, density, duration: Concentration higher with lower volumes
 - Reblock feasible
 - pediatric "asleep" blocks

Why Ultrasound

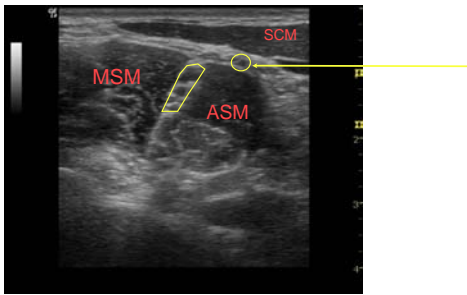
- Patient satisfaction
- MD satisfaction
- Teaching
- Hopefully will bring Regional Anesthesia to a greater portion of surgical patients

Interscalene Approach

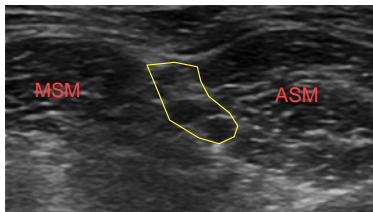




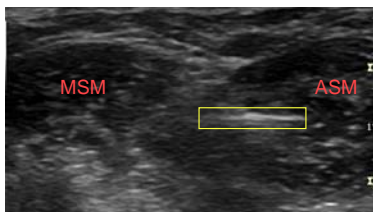
Label this Photo



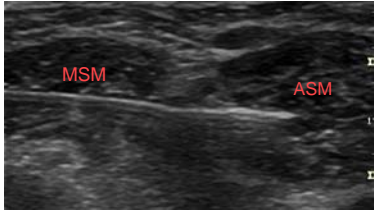
What might this be ?



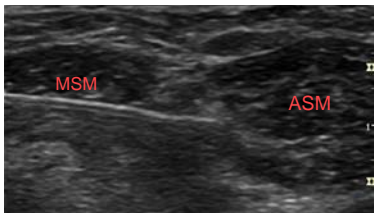
Posterior IS Block



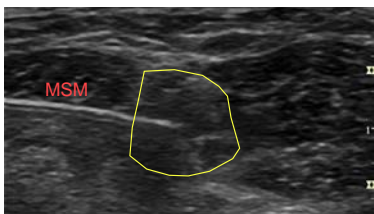
What's this & what's wrong ?



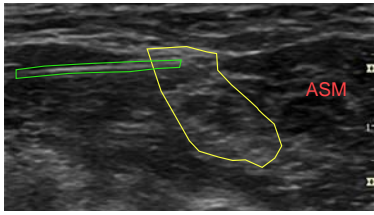
PISB full needle in
ASM



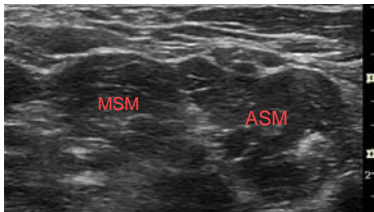
PSIB needle w/in ISG



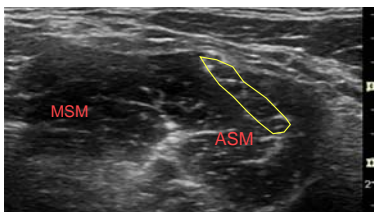
PSIB injection



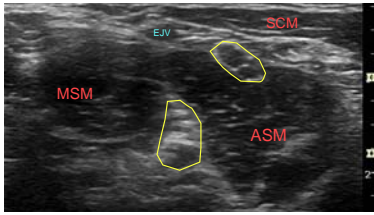
PSIB needle redirect



Anatomic variation; find the nerves



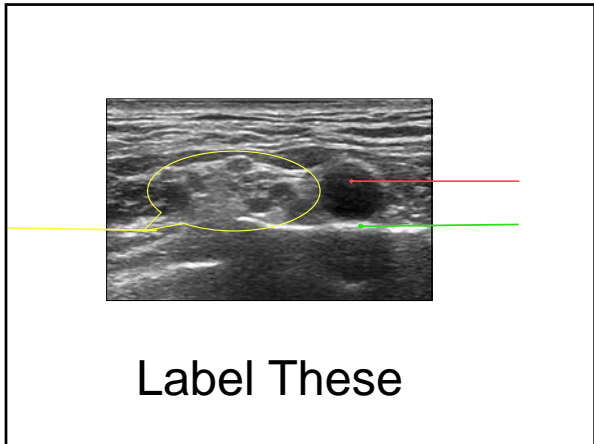
BP w/in ASM

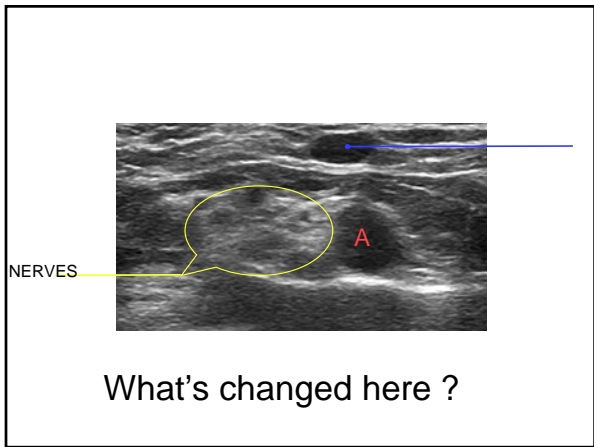


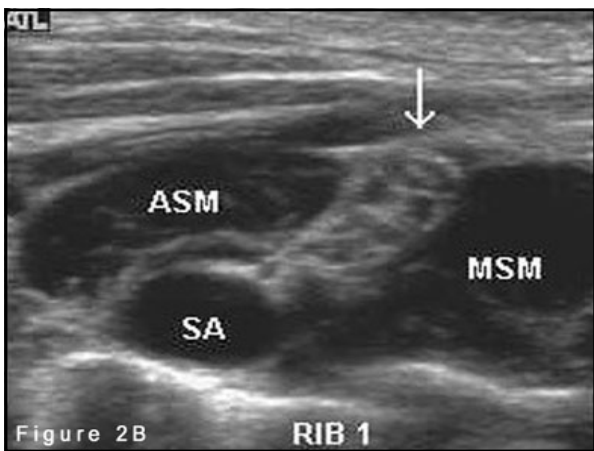
BP split

Supraclavicular Approach



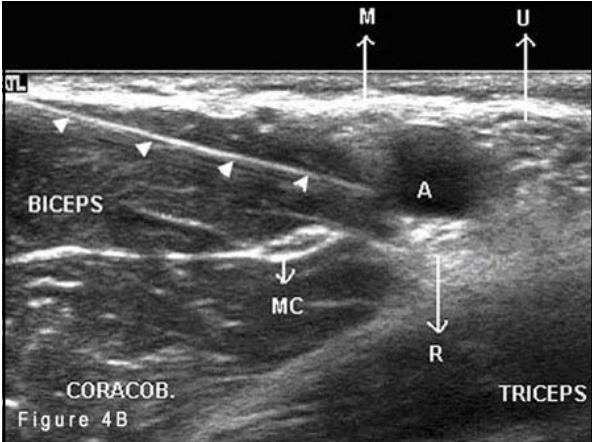


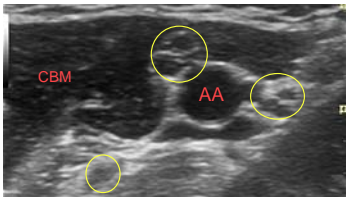




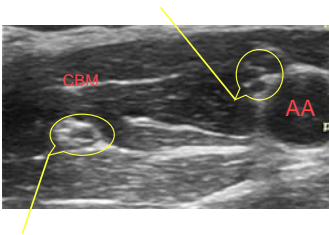
Axillary Approach



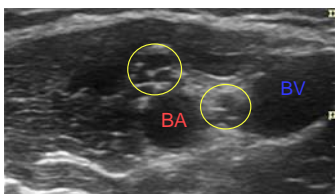




Label structures



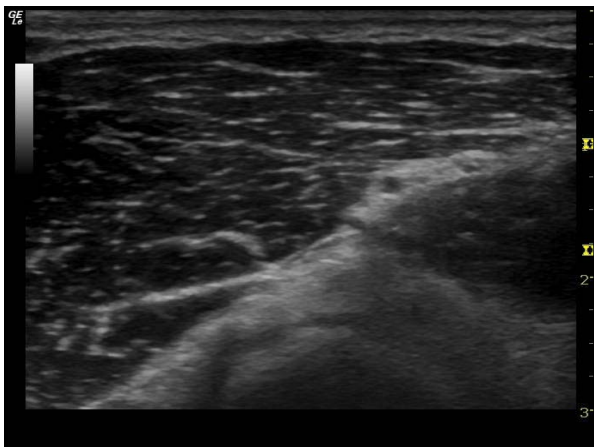
Label these

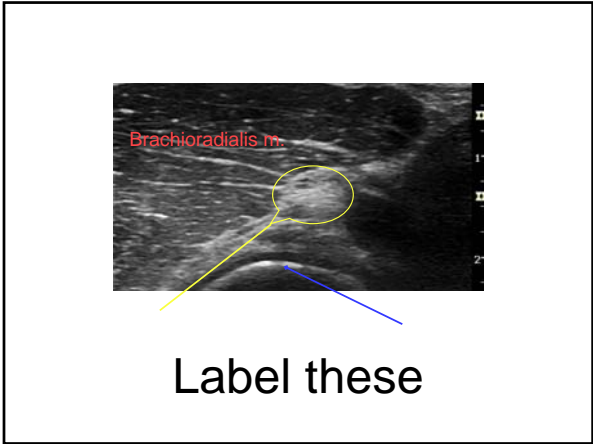


What nerves and where ?

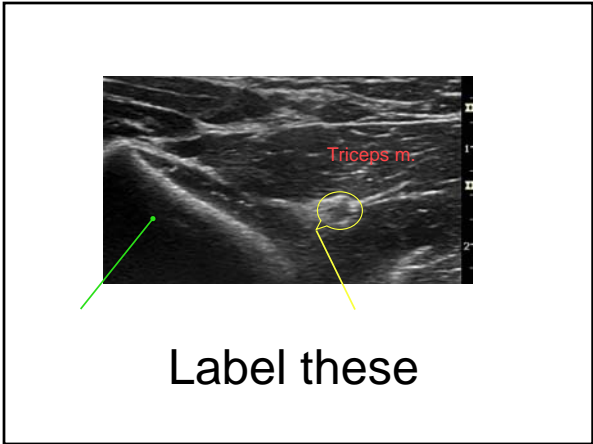
Forearm Approaches



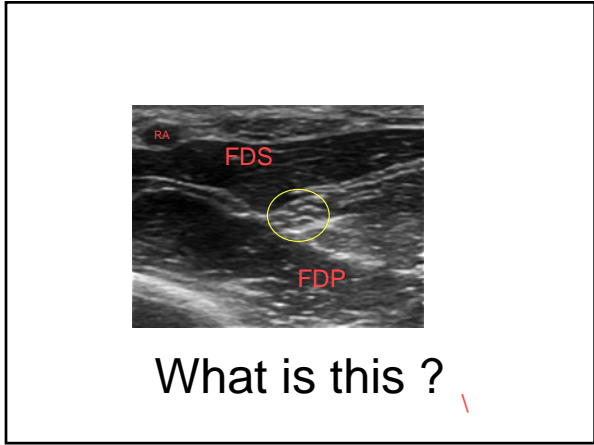




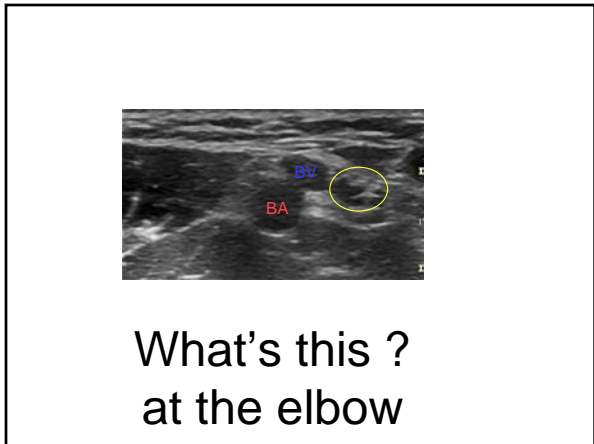






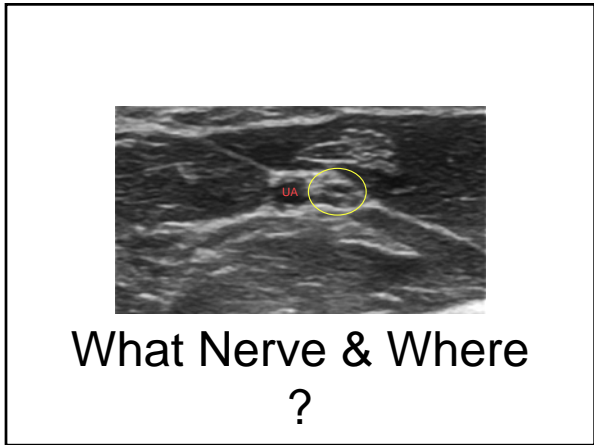


What is this ?

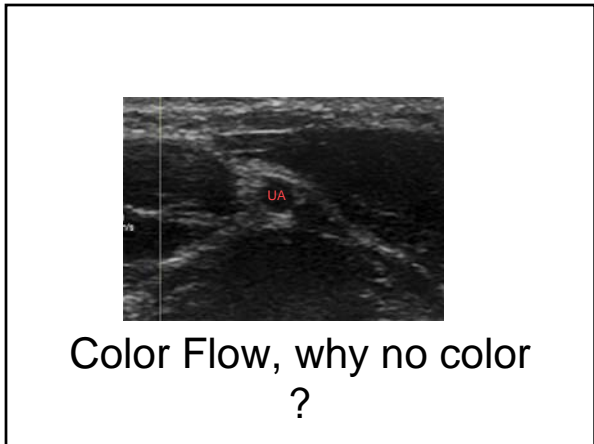


What's this ?
at the elbow

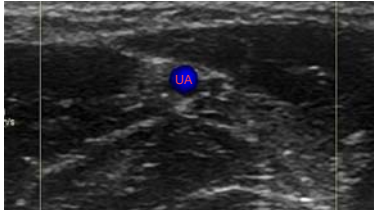




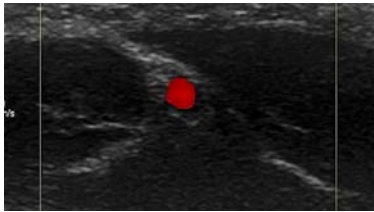
What Nerve & Where
?



Color Flow, why no color
?

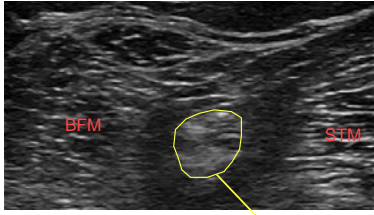


RTBA doppler

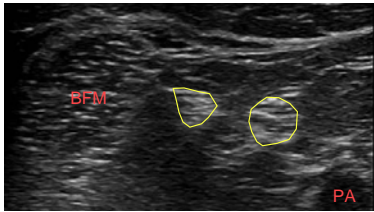


RTBA ulnar a.

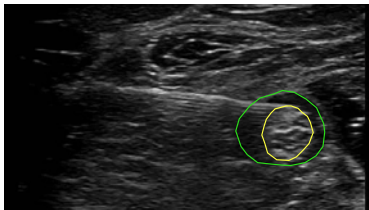




Common Peroneal and Tibial
combined



Label these

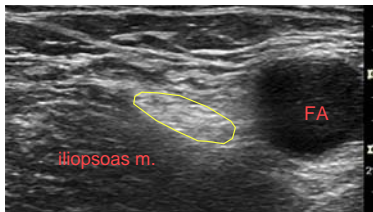


Popliteal Blk: Needle at 12 and injection "donut"

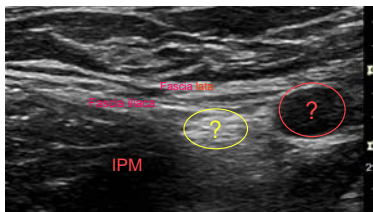
Femoral Nerve: Ultrasound

- To image the femoral nerve under ultrasound, place the probe along the inguinal crease and use the femoral artery as an initial landmark.
 - This is the circular, non-compressible echolucent area in the image



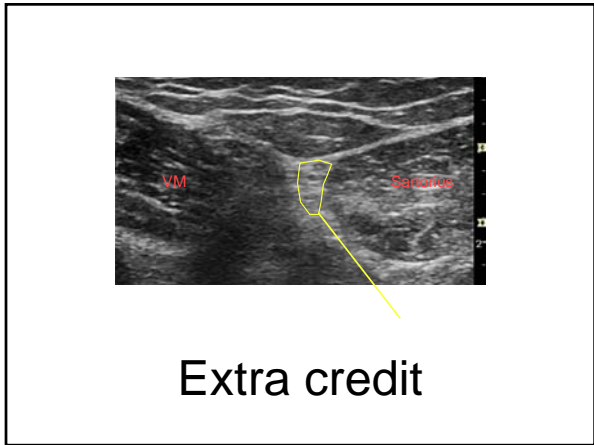


Femoral n. branches



Identify these





Extra credit
